

# Pneumatic Valves

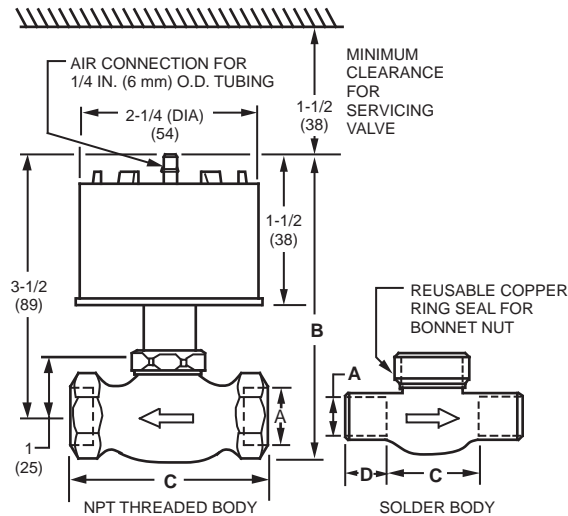
## VP531C Pneumatic Terminal Unit Valve



Normally-open, single-seated valve provides proportional control of steam or hot or cold water in terminal units. Replacement devices are available for Johnson, Powers, Robertshaw, Barber-Colman, and older Honeywell devices.

- Available in several capacities and spring ranges for various application requirements.
- Easily replaceable actuator assembly for convenience of service.
- Compact size for use inside most unit enclosures.

### Dimensions in inches (millimeters)



BODY SIZE	A	B	C	D
1/2 IN. NPT (1.6 OR 2.3 Cv)	1/2 IN. PIPE	4-1/8 IN. (104 MM)	2-9/32 IN. (58 MM)	-
3/4 IN. NPT (2.6 OR 3.3 Cv)	3/4 IN. PIPE	4-3/16 IN. (106 MM)	2-7/16 IN. (61 MM)	-
1/2 IN. SOLDER (1.6 Cv)	5/8 IN. (16 MM) O.D. COPPER TUBING	4-1/8 IN. (104 MM)	1-5/8 IN. (41 MM)	1/2 IN. (13 MM)
3/4 IN. SOLDER (2.6 OR 3.3 Cv)	7/8 IN. (22 MM) O.D. COPPER TUBING	4-3/16 IN. (106 MM)	1-1/2 IN. (38 MM)	3/4 IN. (19 MM)

C7987B

**Valve Type:** Unitary

**Body Pattern:** Two-way

**Body Pressure:** 150 psi (1034 kPa)

**Air Connections:** Push on for 1/4 in. O.D. plastic tubing

**Valve Action:** Proportional Normally Open

**Controlled Medium:** Steam; Water

**Operating Humidity Range (% RH):** 5 to 95% RH

**Temperature Range:** 40 F to 240 F (140 F max difference, alternating hot and cold water service) (4 C to 116 C (78 K max difference, alternating hot and cold water service))

**Close-off Ratings at Branch Line Pressure:** 70 psid at 20 psi (with 2 to 5 psi spring)

**Maximum Safe Actuator Diaphragm Temperature:** 230 F (110 C)

**Maximum Diaphragm Pressure:** 30 psi (205 kPa)

**Includes:** 3-10 psi spring is packed in box

### Accessories:

**14003648-001-**Vandalism Resistant Assembly, Cover assembly with 1/8

in NPT air Connection and push-in retainer to replace standard Cover

**14004932-001-**Pneumatic Valve Adapter (M6410/M7410 linkage and a green main spring to allow to retrofit an electric actuator)

### Replacement Parts:

**315913/0041-**Orange Spring, 3 to 10 psi for VP525, VP526, VP527, VP531

**316026-**Yellow Spring, 8-11 psi

**316027/0042-**Green Spring, 2 to 5 psi

**14001046-004-**Cover fastener for VP525A,C; VP526A; VP527A; or VP531A,C

**14002560-010-**Repair stem assembly, 1.6 Cv VP531C or to Upgrade, 1.6 Cv VP531A

**14002560-011-**Repair stem assembly for 2.6 Cv VP531C or to Upgrade 2.6 Cv VP531A

**14002560-012-**Repair stem assembly for 3.3 Cv VP531C or to Upgrade 3.3 Cv VP531A

**14003102-001-**Replacement top assembly

**14003297-002-**Teflon packing kit for VP531C or VP531A upgrade valves

**14004898-001-**Repair Top & Insert for NPT and Solder body, 1.6 Cv VP531C or to upgrade NPT and solder body, 1.6 Cv VP531A

**14004898-002-**Repair Top & Insert for NPT and Solder body, 2.3 and 2.6 Cv VP531C or to upgrade NPT and solder body, 2.3 and 2.6 Cv VP531A

**14004898-003-**Repair Top & Insert for NPT and Solder body, 3.3 Cv

Product Number	End Connection Size		Type of End Connection	Capacity		Spring Range		Comments
	(inch)	(mm)		(Cv)	(Kv)	(psi)	(kPa)	
VP531C1000/U	1/2 in.	12.7 mm	NPT	1.6 Cv	1.38 Kv	2 psi to 5 psi	14 kPa to 34 kPa	Replacement for VP531A1004 and VP531A1012
VP531C1018/U	3/4 in.	19.1 mm	NPT	2.6 Cv	2.24 Kv	2 psi to 5 psi	14 kPa to 34 kPa	Replacement for VP531A1046 and VP531A1053
VP531C1026/U	3/4 in.	19.1 mm	NPT	3.3 Cv	2.85 Kv	2 psi to 5 psi	14 kPa to 34 kPa	Replacement for VP531A1061 and VP531A1079
VP531C1034/U	1/2 in.	O.D.: 15.9 mm; Nominal: 12.7 mm	Solder	1.6 Cv	1.38 Kv	2 psi to 5 psi	14 kPa to 34 kPa	Replacement for VP531A1087 and VP531A1095
VP531C1042/U	3/4 in.	O.D.: 22.2 mm; Nominal: 19.1 mm	Solder	2.6 Cv	2.24 Kv	2 psi to 5 psi	14 kPa to 34 kPa	Replacement for VP531A1103 and VP531A1111